

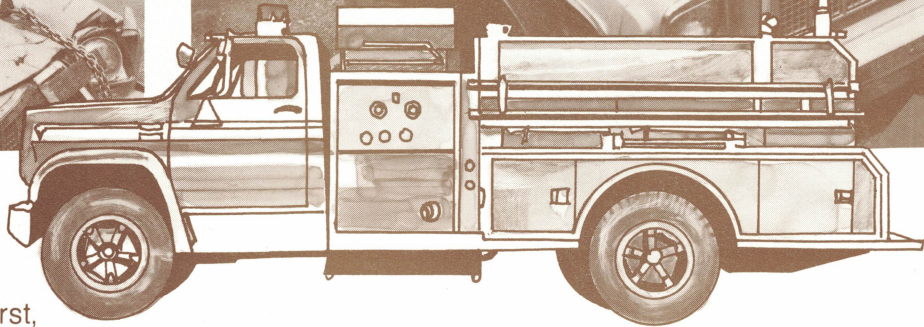
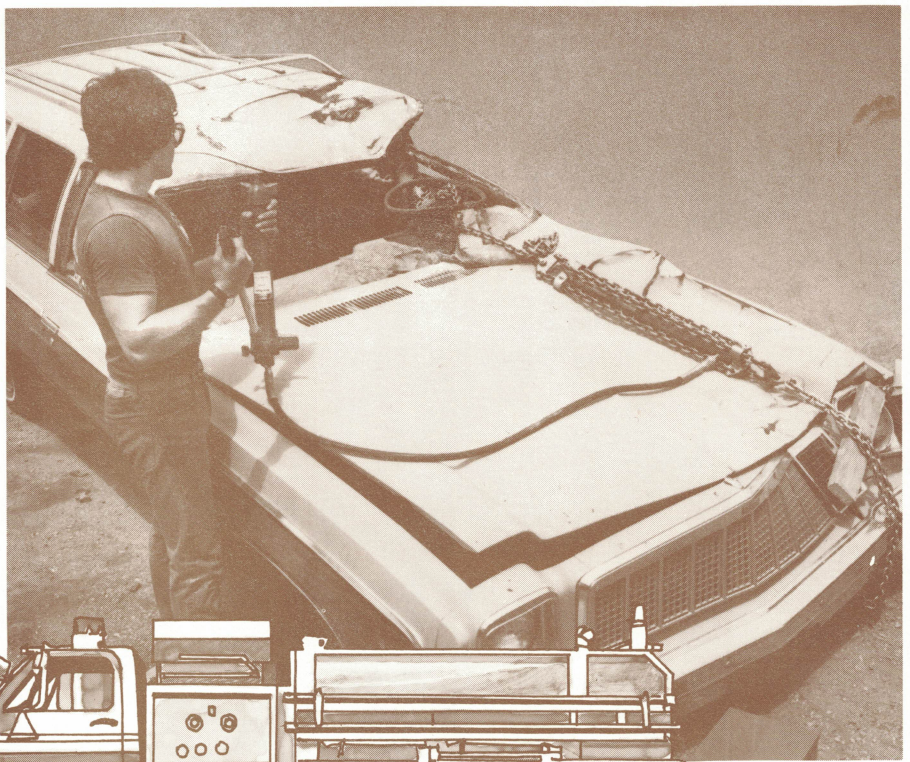
Needed: An effective emergency extrication system, inexpensive enough to permit equipping all your rescue and fire-fighting vehicles.

The Life Guard System

By The Turben Company

That extra measure of assurance

In an automobile accident, the loss of even a few minutes can be tragic. A person pinned behind the wheel and your department's extrication tool is in another vehicle . . . valuable time is lost while you and victim wait . . . and wait . . . and wait. This situation has established the need for a new generation of rescue/extrication equipment.



The traditional extrication tool is a fine working system, but is also clearly inadequate in two ways. First, its high cost prohibits equipping all the vehicles you'd like. And secondly, by not having extrication tools widely disbursed, you're going to lose valuable time . . . and possible lives!

Until now, there has been no middle ground. Budget constraints have made it impossible for many rescue teams to receive the level of equipment they need to be immediately effective.

The Turben Company's "Life Guard System" answers this need once and for all.

A lot of pull or push . . . for very little money.

The best way to appreciate the 10-ton pull (or push) of a "Life Guard System" is to watch one. Up close. Check its quality construction. Note its simple assembly. Fast operation. Lightweight for hand carry. All

together you get a tool one man can carry through rugged terrain. A tool that can be hooked up and operated in the dark. Again, all by one man.

And all at a price substantially below other systems with similar uses . . . pulling auto posts . . . doors . . . tops . . . seats . . . and steering wheels.

Now for a demonstration of one of its many uses... steering wheel pulling.

Slip one chain around the steering column. Hook the other end to the car's frame.

Attach the Turben Puller and ram.

Place wooden blocks at areas easily compressed, like the dashboard.

Now, less than one minute later, you're ready to pull. Pump the 10-inch long-stroke ram. Pressure on the victim is usually relieved sufficiently in one pull to permit his or her removal.

Total elapsed time, 2 to 3½ minutes, depending on operator's proficiency.

A complete Life Guard System includes:

- One 10-ton 10-inch Turben Puller
- One 10-ton 10-inch long-stroke hydraulic ram
- One 10-ton hydraulic pump with hose
- Two 8-foot lengths of 5/16 inch chain with hooks
- One metal box

Total weight only 80 lbs.

Printed in U.S.A.



The Turben Company, Inc.

Home Office: (916) 541-1913 • P.O. Box 5157 • Stateline, NV 89449
 Order Desk: (602) 978-8328 • 3845 W. Phelps • Phoenix, AZ 85023